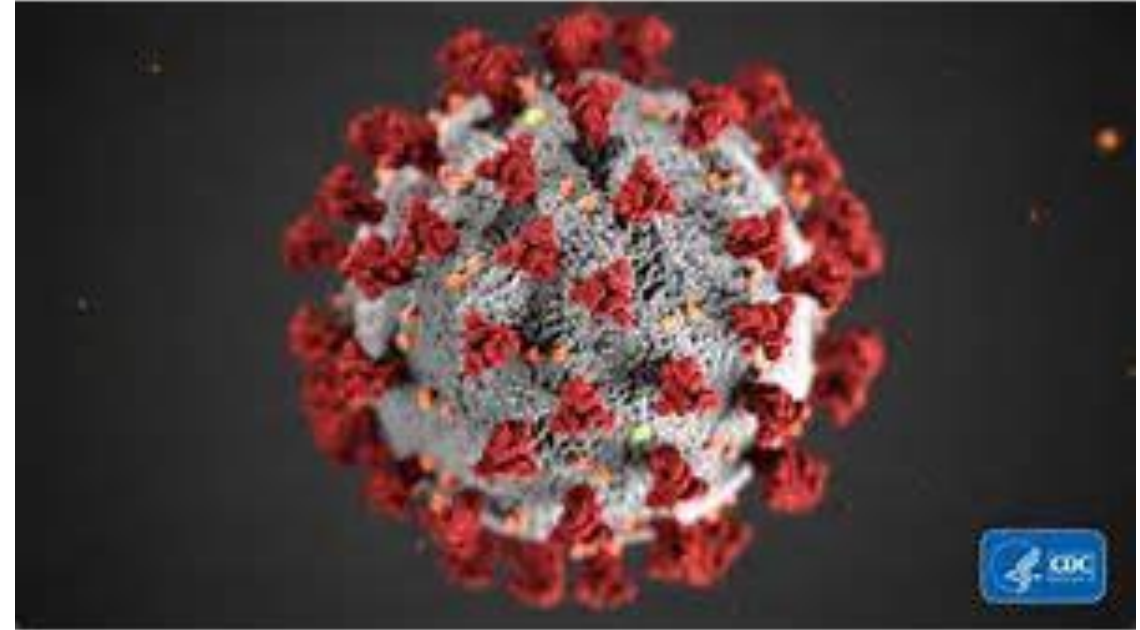


Roadmap to Recovery Stage 2 Variance Update



Monterey County Health Department, Public Health Bureau

May 26, 2020



California's Roadmap to Recovery



**STAGE 1:
Safety and
preparedness**

Making essential workforce environment as safe as possible



**STAGE 2:
Lower-risk
workplaces**

Creating opportunities for lower risk sectors to adapt and re-open

Modified school programs and childcare re-open



**STAGE 3:
Higher-risk
workplaces**

Creating opportunities for higher risk sectors to open and adapt



**STAGE 4:
End of Stay
Home Order**

Return to expanded workforce in highest risk workplaces

Requires therapeutics



Advancing Through Stage 2

California counties may advance through Stage 2 faster than the state-recommend pace with Attestation

➤ Variance #1

- Released May 8
- Small rural counties attested

➤ Variance #2

- Released May 18
- Revised Indicators based on statewide data
- Opportunity for medium and larger counties to attest



Stage 2 Variance #2 Readiness Criteria

- Epidemiologic Stability of COVID-19
- Protection of Stage 1 Essential Workers
- Testing Capacity
- Containment Capacity
- Hospital Capacity
- Vulnerable Populations
- Sectors and Timelines
- Triggers for Adjusting Modifications
- COVID-19 Containment Plan

1. Epidemiologic Stability of COVID-19

Stable/decreasing number of COVID-19 hospitalizations: 7-day average of daily percent change in total hospitalized confirmed COVID-19 patients $\leq 5\%$

STATUS: Met (-0.2%) ✓

OR

<20 confirmed COVID-19 hospitalized on any single day over the past 14 days

STATUS: Met (11) ✓

Epidemiologic Stability of COVID-19

AND

14-day cumulative
COVID-19 incidence of
<25 cases per 100,000

STATUS: Not Met
(28.6) X

OR

Test positivity rate over
last 7 days <8%

STATUS: Met (2.3%) ✓

2. Protection of Essential Workers

Guidance has been provided for employers and essential critical infrastructure workplaces on how to structure the physical environment to protect essential workers

STATUS: Met ✓

AND

Description of availability of supplies to protect essential workers and how availability is assessed

STATUS: Met ✓

3. Testing Capacity

Minimum daily testing capacity to test 1.5 people per 1,000 residents

STATUS: Met (1.6) ✓

AND

Testing availability for $\geq 75\%$ of residents measured by testing sites within 30 min driving time in urban areas and 60 min in rural areas

STATUS: Met (88% urban, 95% rural) ✓

Testing Capacity

AND

Provide COVID-19
surveillance plan including
testing strategy

STATUS: Met ✓



4. Containment Capacity

At least 15 staff per 100,000 residents trained & available for contact tracing (65)

***STATUS: Partially met (44)
with plan to meet*** ⚠️

AND

Availability to temporarily shelter $\geq 15\%$ of county residents experiencing homelessness

STATUS: Met (46%) ✓

5. Hospital Capacity

Hospital capacity to accommodate COVID-19 patients at volume $\geq 35\%$ of baseline average daily census

STATUS: Met (829 beds including 148 ICU) ✓

AND

Hospitals have robust plan to protect hospital workforce

STATUS: Met ✓

6. Vulnerable Populations

Plan to prevent & mitigate
COVID-19 infections in SNFs

STATUS: Met ✓

AND

SNFs >14-day supply of PPE
with established process for
procurement from non-state
supply chain

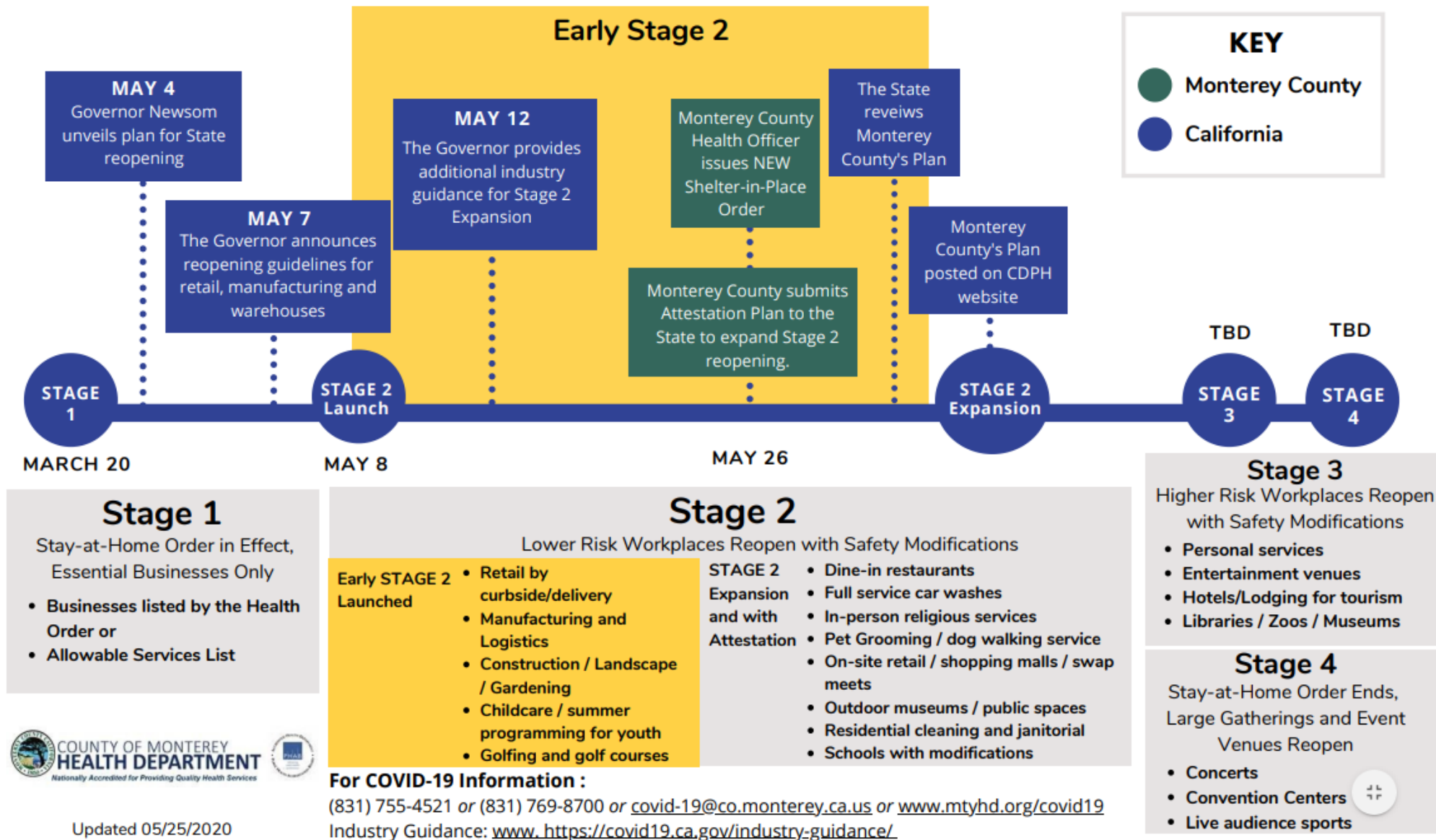
***STATUS: Partially met with
plan to meet*** ⚠

7. Sectors & Timelines

Details of plan to move through Stage 2 with which sectors & spaces will be opened, in what order, and on what timeline

STATUS: Met ✓

WHAT'S NEXT FOR BUSINESS REOPENING?



Updated 05/25/2020



8. Triggers for Adjusting Modifications

County metrics that serve as triggers for slowing the pace through Stage 2 or tightening modifications

STATUS: Met ✓

Example of Triggers for Adjusting Modifications

Indicator or Metric	Frequency of Measurement	Baseline	Threshold
Ability to Test, Contact Trace, Isolate, and Support the Exposed			
Percent of Cases Reached by Public Health Investigators	Daily for first 3 weeks then weekly	98.5%	<90%
Ability to Protect Those at High Risk for COVID-19			
Number of deaths over 14 days	Daily	2	≥5
Surge Capacity for Hospitals and Health Care System			
Percentage of ICU beds available averaged over the last 14 days	Daily for first 3 weeks then weekly	71%	<54%
Epidemiology and General Surveillance			
Case Doubling Rate	Daily	29 days	<8 days



COVID-19 Containment Plan

TO INCLUDE:

- Testing
- Contact Tracing
- Living and Working in Congregate Settings
- Protecting the Vulnerable
- Acute Care Settings
- Essential Workers
- Special Considerations
- Community Engagement
- Relationship to Surrounding Counties



Other Supporting Documentation

Letters of Support

- Board of Supervisors
- County Hospitals
- City Councils



Health Officer Orders

Order	Date Issued	Date(s) Revised
Shelter in Place	May 17, 2020	April 3, 2020 May 2, 2020 May 8, 2020 - Supplement issued
Laboratory Reporting	April 10, 2020	N/A
Short Term Housing	April 24, 2020	May 3, 2020
Face Covering	April 28, 2020	N/A



New Shelter-in-Place Order

Early Stage 2

- Full-service car washes
- Pet grooming
- Outdoor museums, open gallery spaces, and other public places with modifications
- Dog walking service
- Residential cleaning and janitorial

Expanded Stage 2 with Attestation

- Destination retail (shopping malls and swap meets)
- Dine-in restaurants (bars, gaming areas, not permitted)
- Schools with modifications



Board Action

Consider adopting a resolution to:

- A. Approve and authorize the Chair of the Board of Supervisors to execute a letter in support of the County Health Officer's Attestation for Variance through Stage 2 of the State's Roadmap to Pandemic Resilience, and
- B. Authorize and direct the County Health Officer to transmit the attestation and its accompanying documents to the State Department of Public Health.



Next Steps

- Submittal of Monterey County Attestation Form and Containment Plan to CDPH
- Issuance of New Shelter-in-Place Health Officer Order
- Education and Inspection of businesses allowed to re-open



Thank you

Q&A

